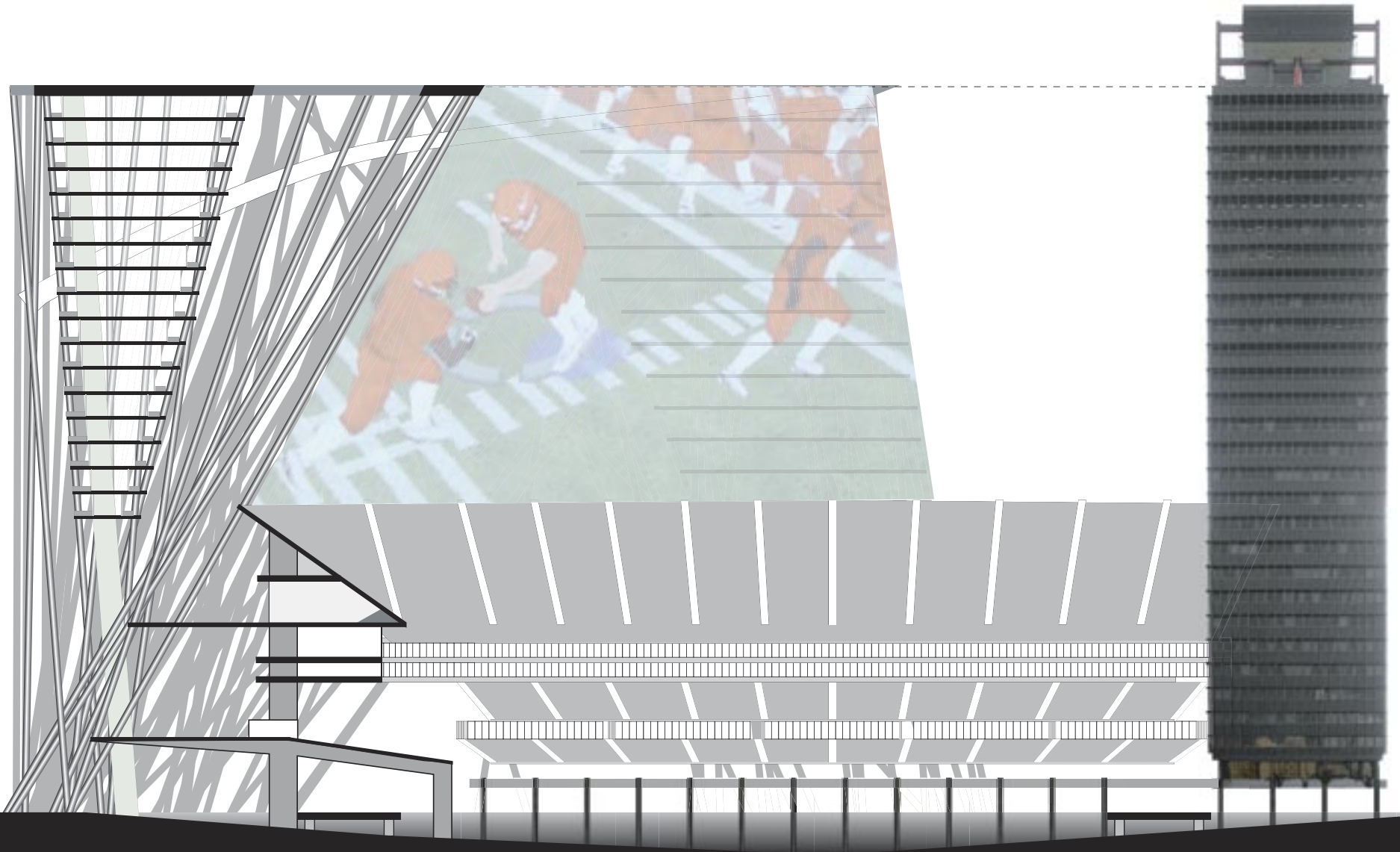
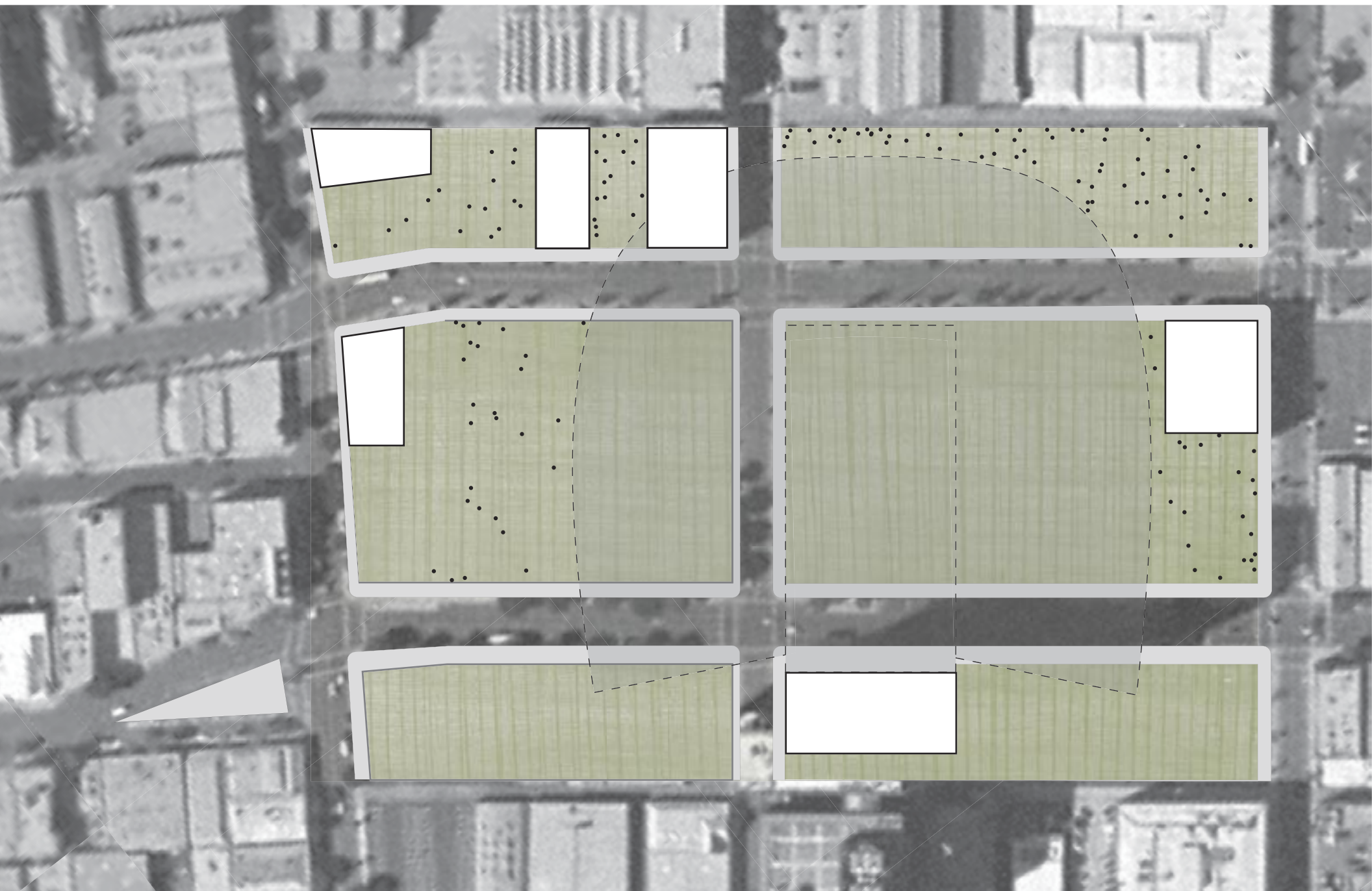
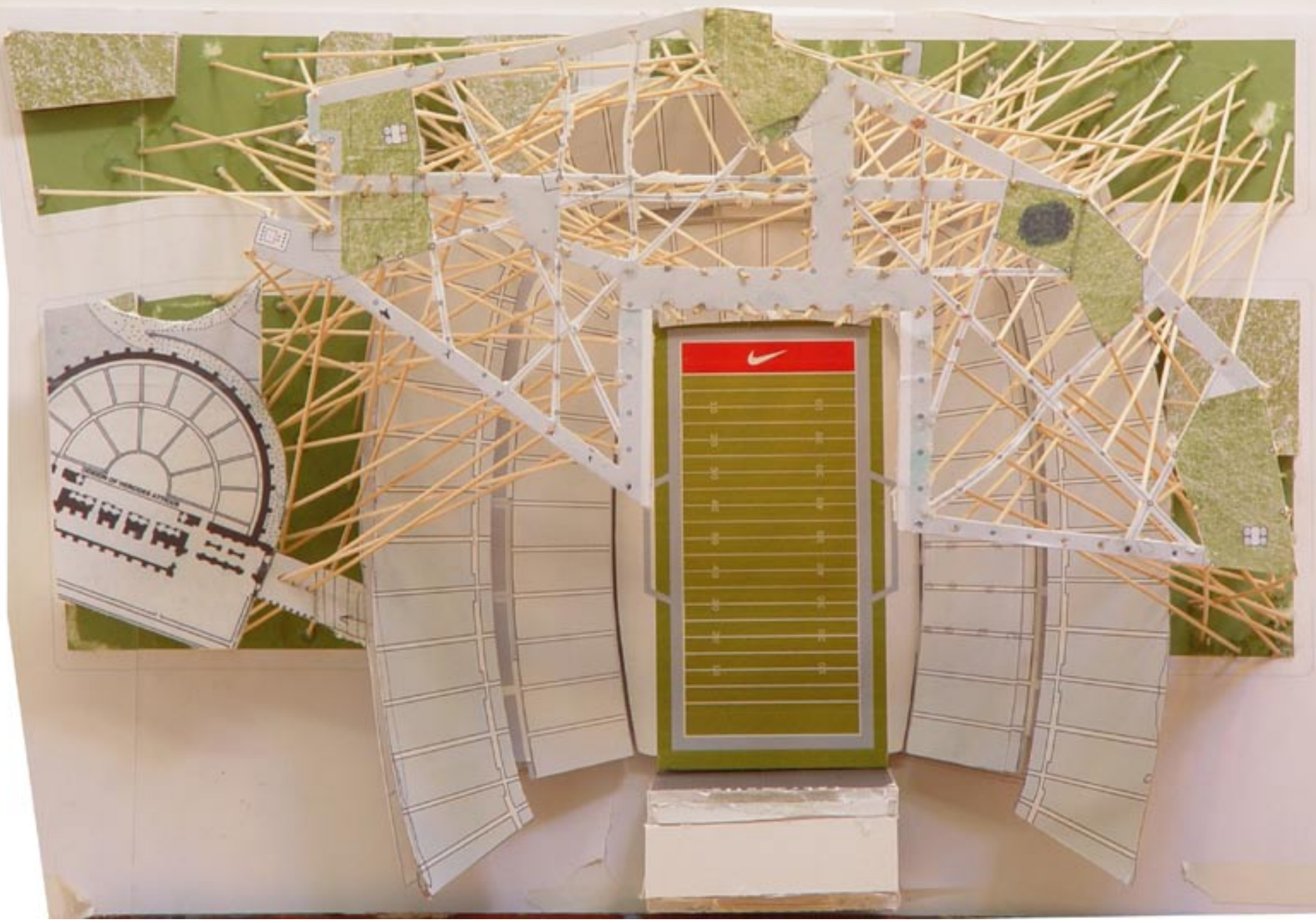
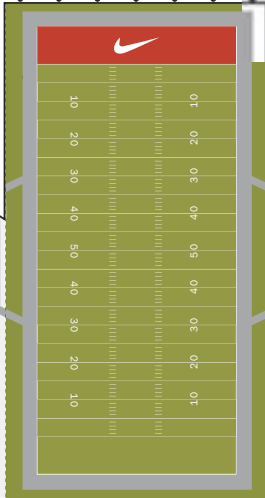
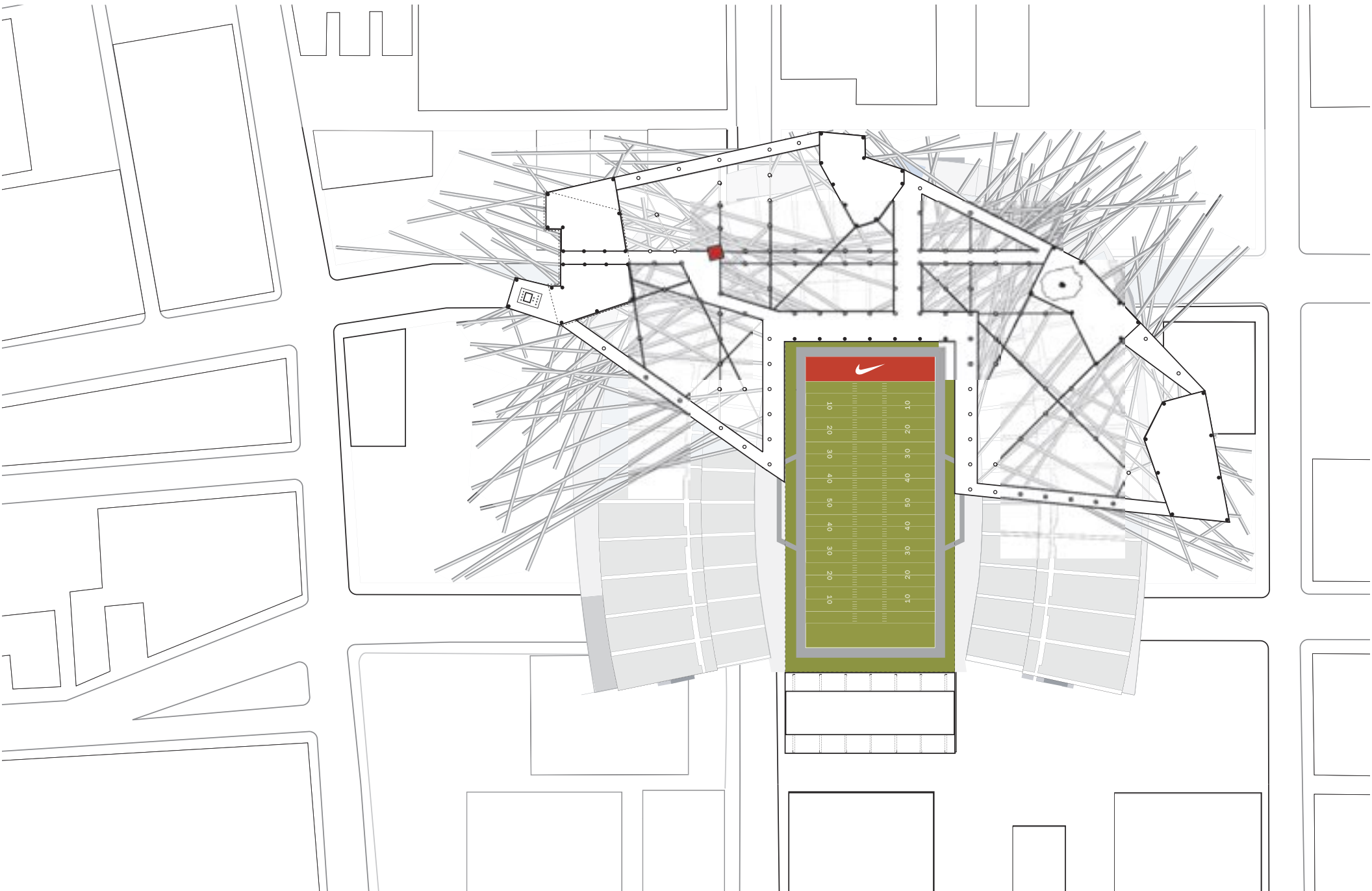


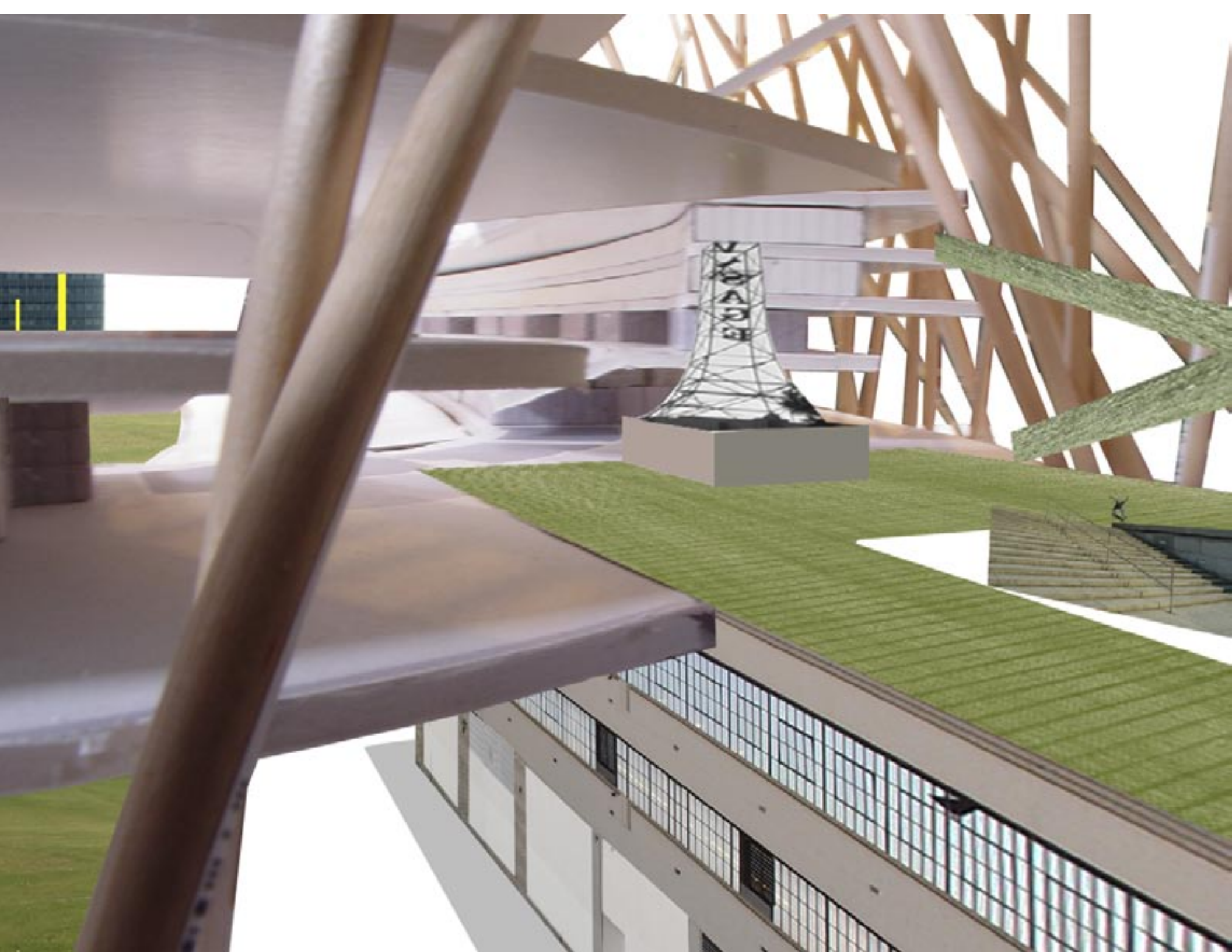
412'

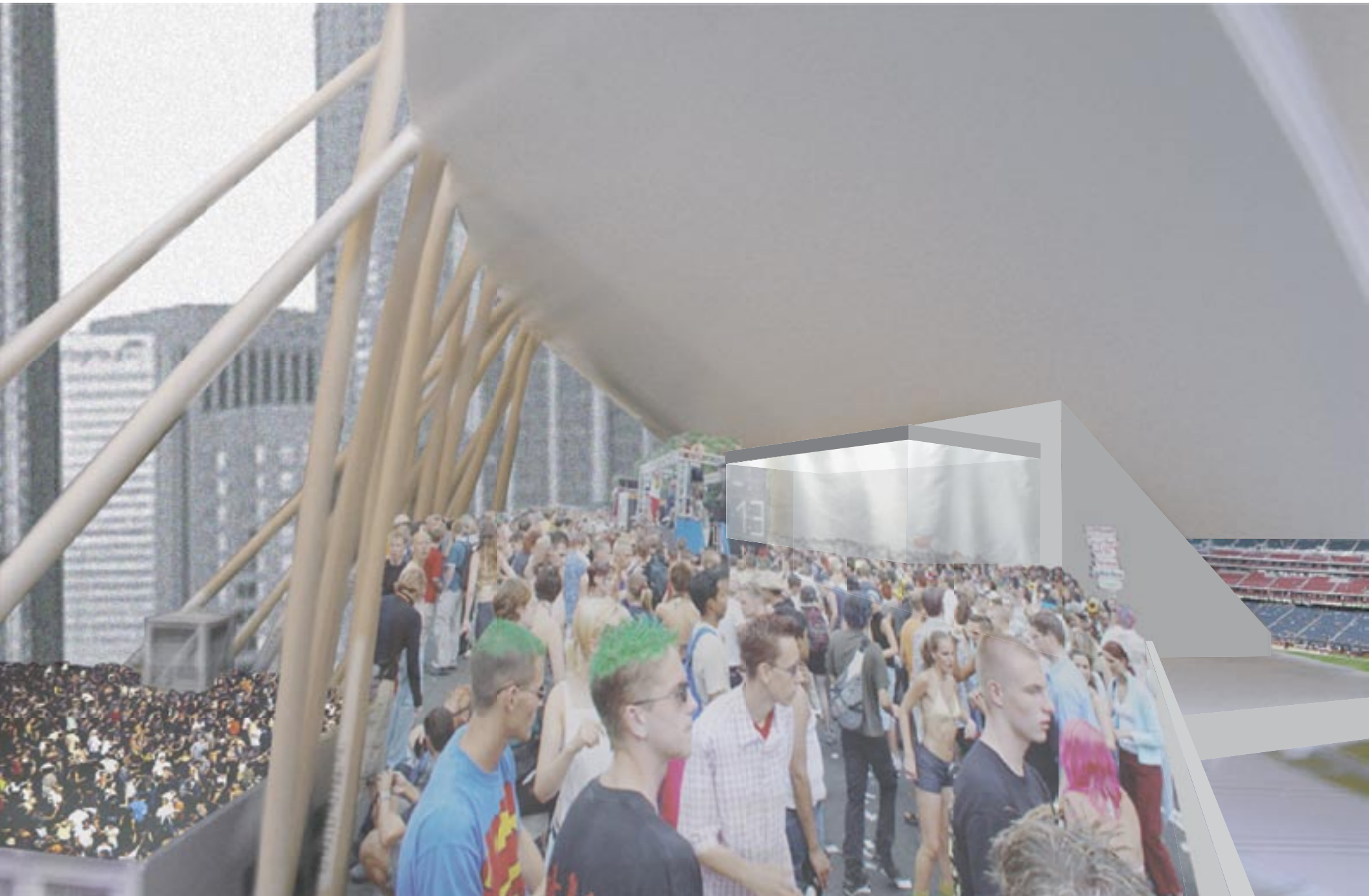




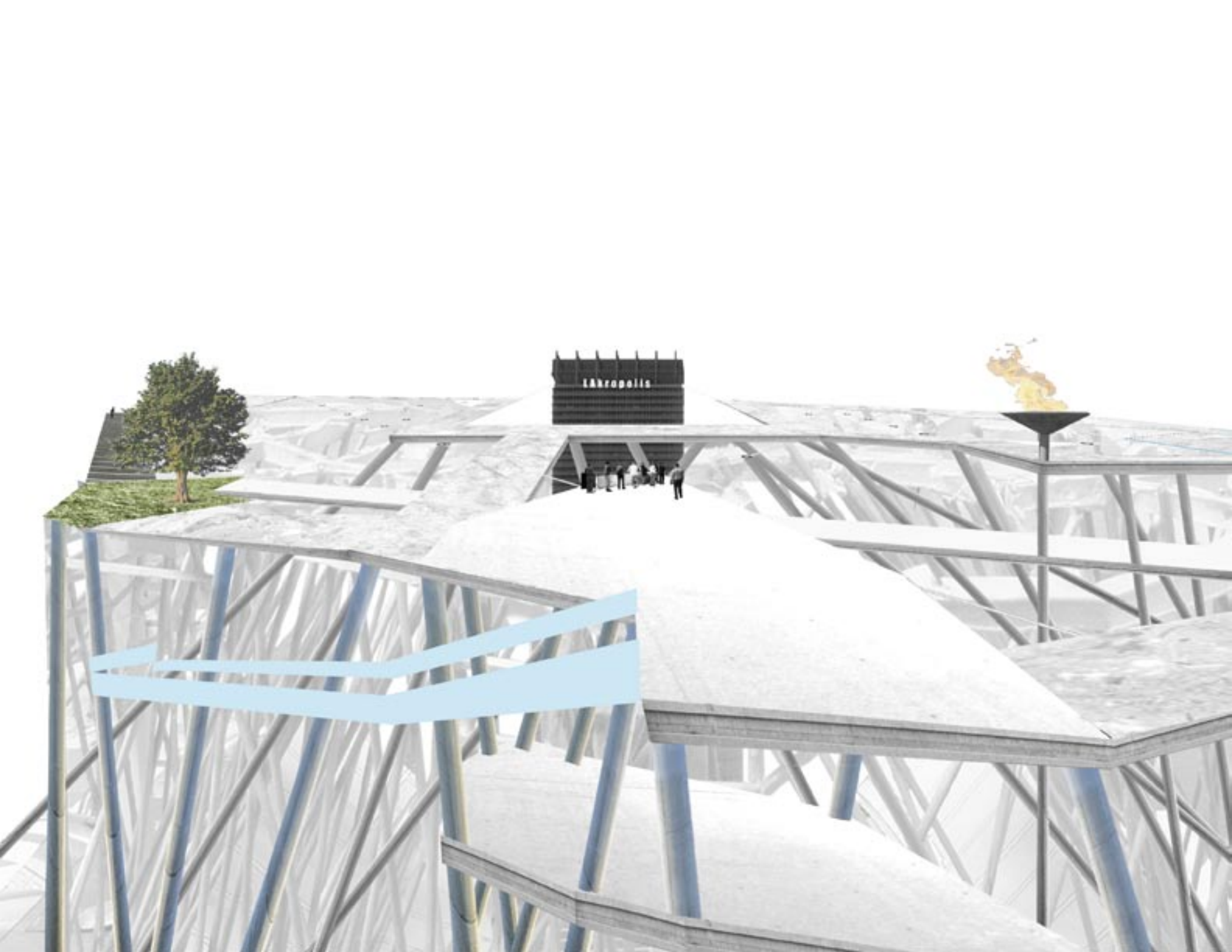






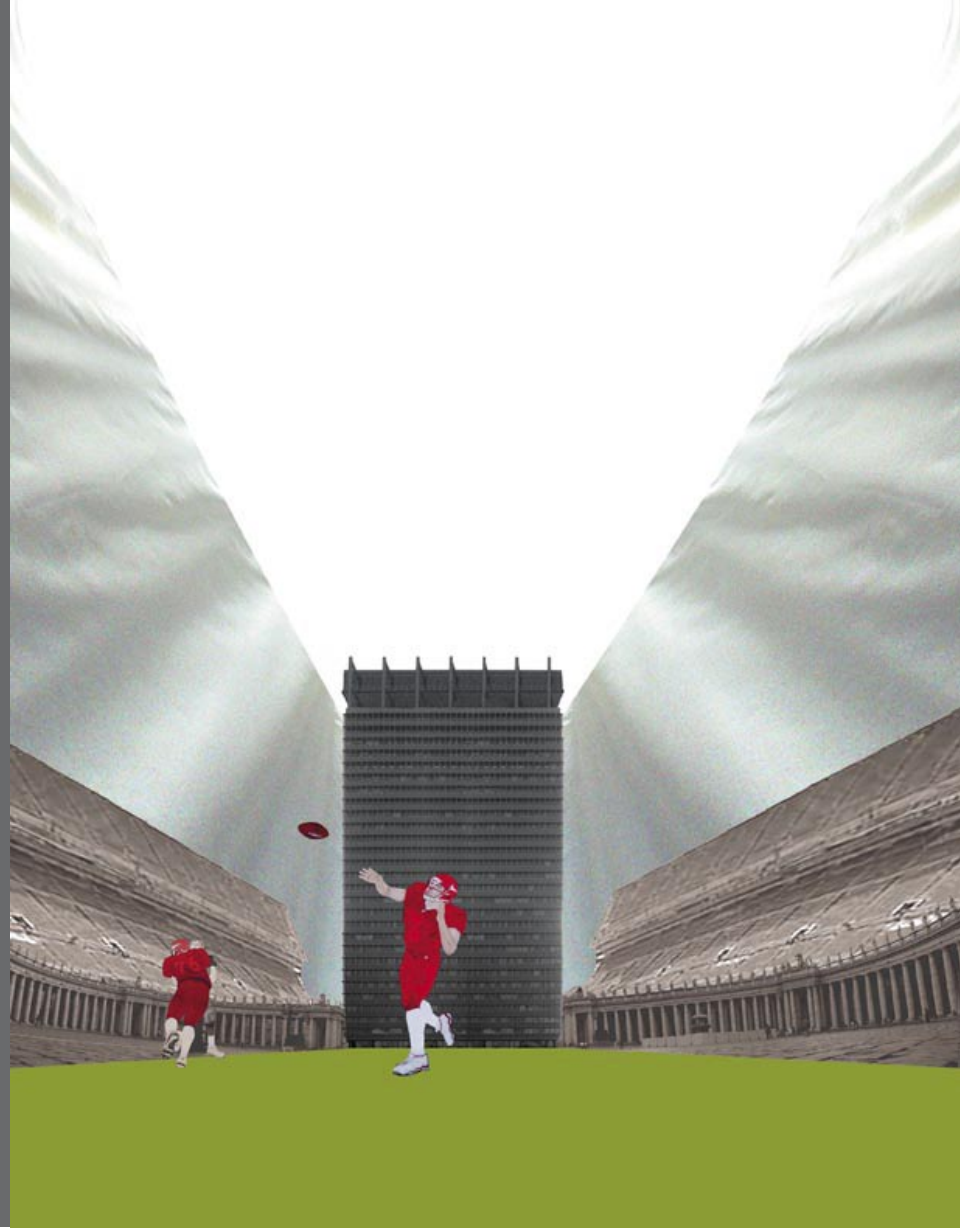
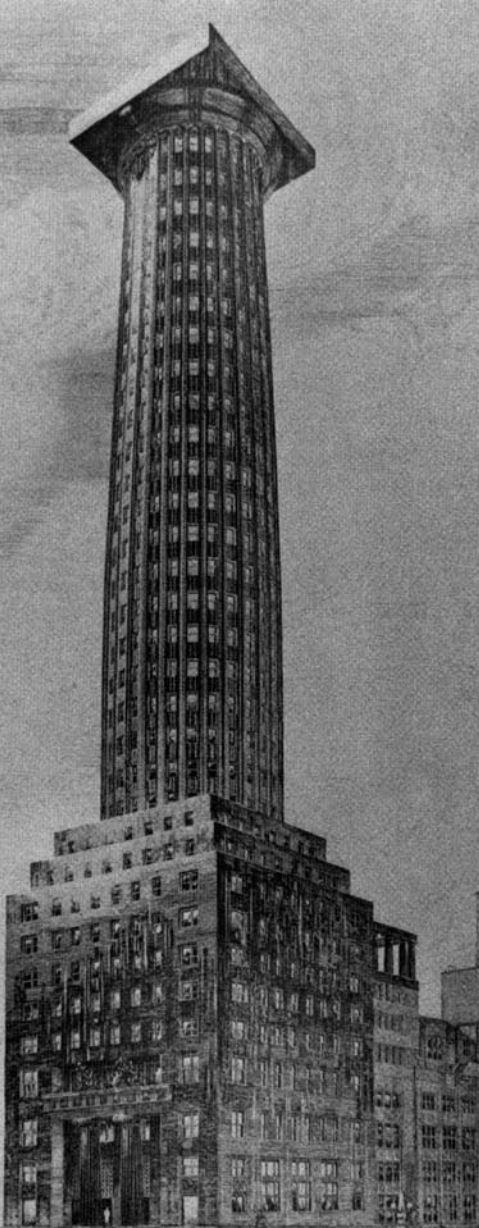




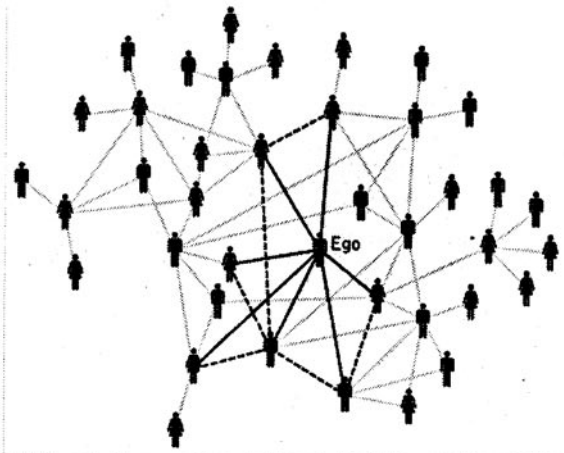


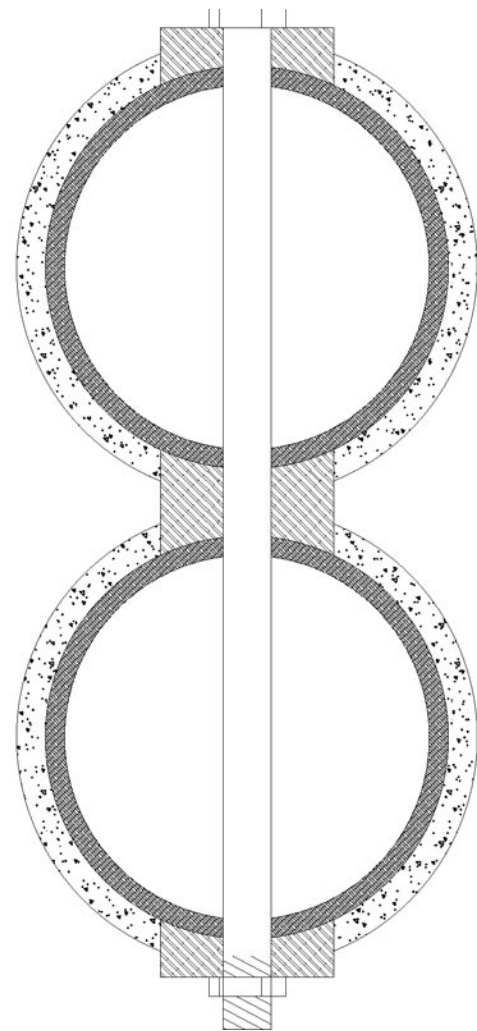
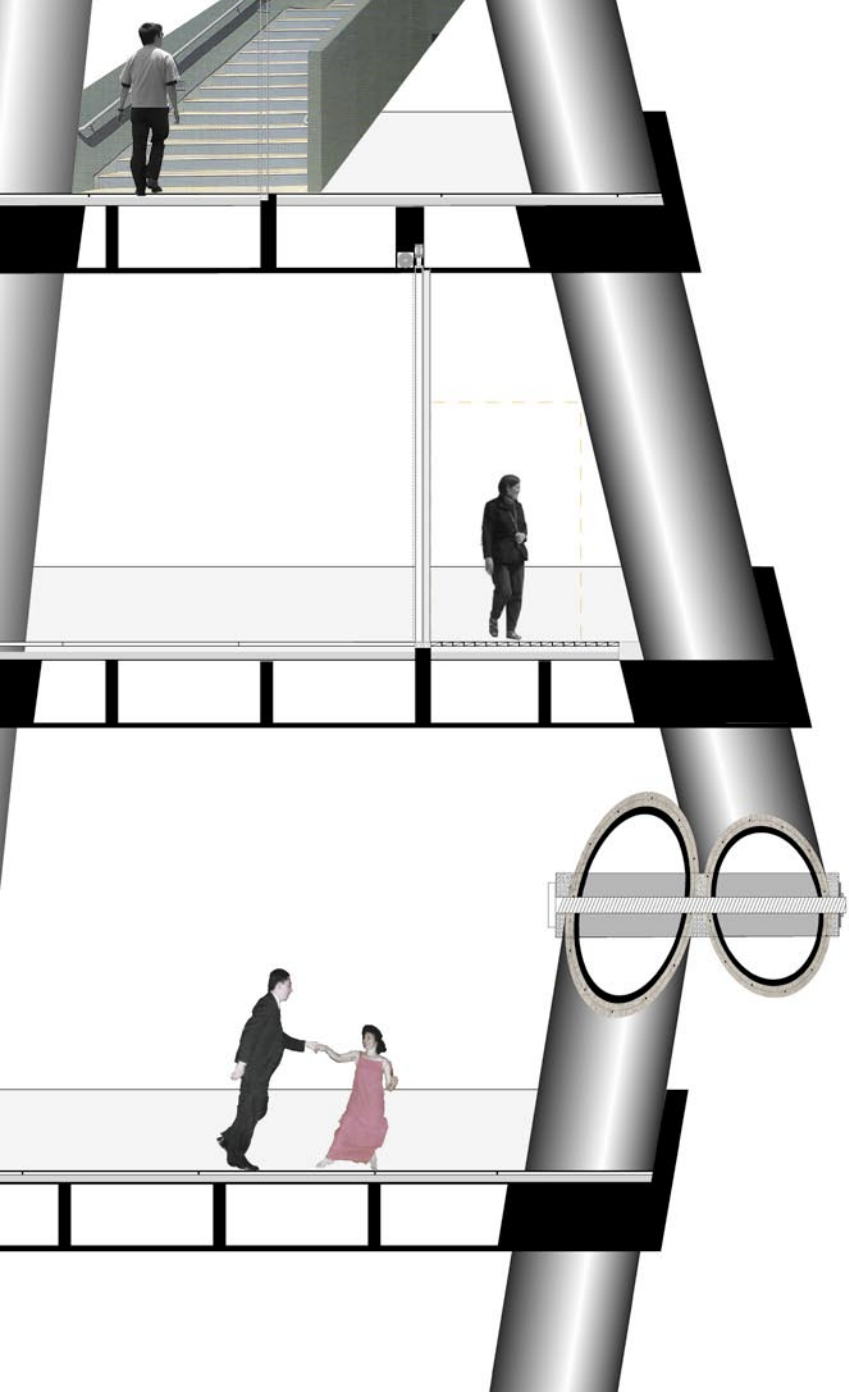
Akropolis

CLASSIC TOWER IS A GIANT COLUMN - A HUGE INDIVIDUAL

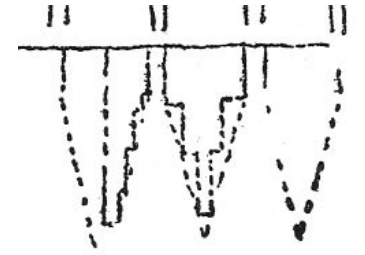
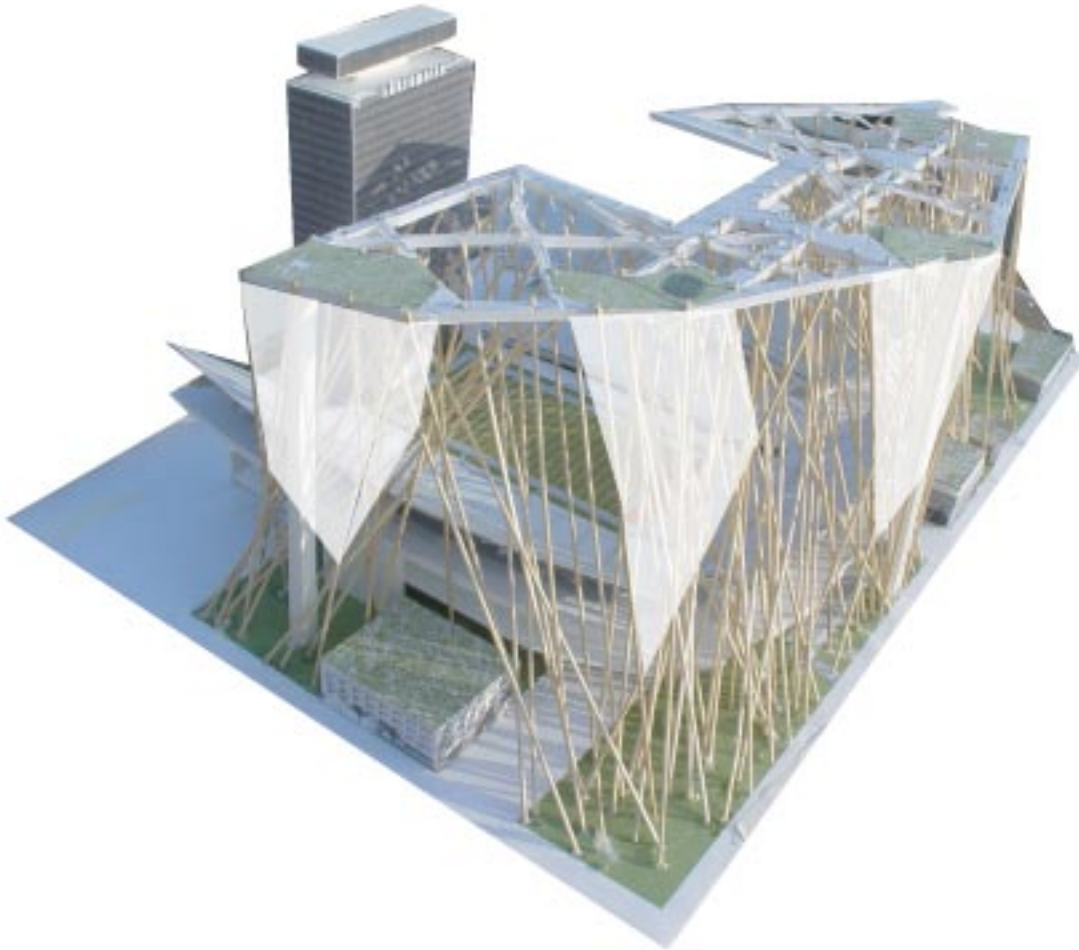


TO A TOWER MADE OF A NETWORK OF CONNECTED COLUMNS





FLIP THE TYPICAL BUILDING VOLUME ENVELOPE UPSIDE-DOWN



CREATE APARTMENTS IN THE SKY AND PARKS ON THE GROUND

